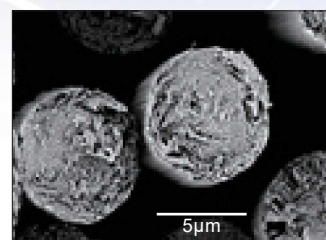


# High Modulus and High Strength Fibers

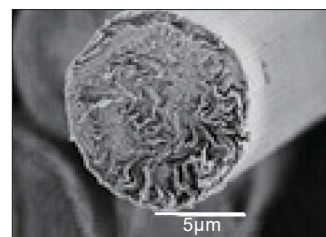
## YSH, YS Fibers

### Advantage :

- Variety of tow count : 1K, 3K, 6K and 12K
- High strength : ~ 3900 MPa
- Excellent handling 7micron diameter
- Zero CTE
- High thermal conductivity(~ 500 W/mK)
- Prepreg 30 ~ g/m<sup>2</sup>
- Woven Fabric 75 ~ g/m<sup>2</sup>



YSH(7micron)



XN(10micron)

### YSH-50A , 60A, 70A fiber

Grade	Tensile Modulus	Tensile Strength	Elongation	Density	Thermal conductivity	Tow count	Yield
	GPa	MPa	%	g/cm <sup>3</sup>	W/mK	K	g/1000m
YSH-70A	720	3630	0.5	2.14	250	1 / 3 / 6	75 / 250 / 520
YSH-60A	630	3900	0.6	2.12	180	1 / 3 / 6	75 / 250 / 520
	630	3600	0.5	2.12	180	12	1040
YSH-50A	520	3900	0.7	2.10	120	1 / 3 / 6	75 / 250 / 520

### YS-80A , 90A fiber

Grade	Tensile Modulus	Tensile Strength	Elongation	Density	Thermal conductivity	Tow count	Yield
	GPa	MPa	%	g/cm <sup>3</sup>	W/mK	K	g/1000m
YS-90A	880	3530	0.3	2.18	500	3 / 6	250 / 520
YS-80A	785	3630	0.5	2.17	320	3 / 6	250 / 520